

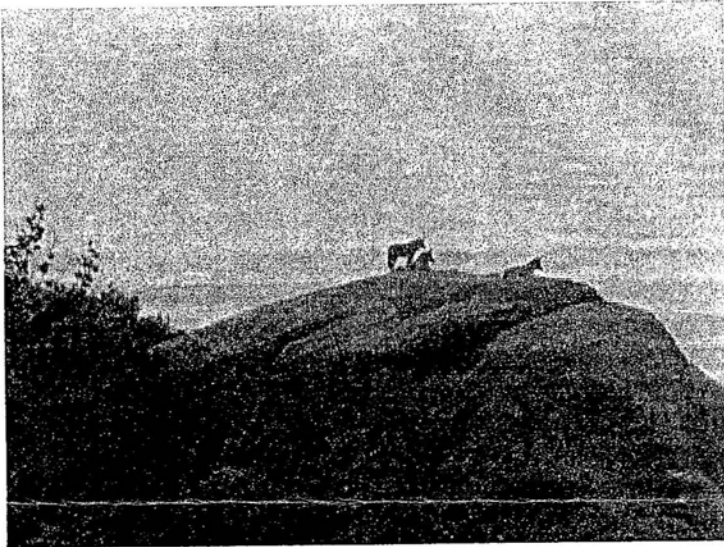


*Santa Susana Mountain Park Association*

Volume 30, Issue 26

A Non-Profit 501(c)(4) Organization  
Incorporated August 31, 1971

## March 2003 Newsletter



### Eagles Nest Family

Walking through the green, clean hills  
not even thinking of looking for a thrill  
while all about us I happily see  
the colorful flowers of spring looking at me.

My attention is certainly demanded  
when a rock above me is commanded  
by a family of coyotes taking in the view,  
who hope, no doubt, to sight a meal or two.

But, once they see me, they stand and stretch  
and melt into the chaparral to see what they can catch.

--T.T.

## Watershed Stewardship

California has lost 95% of its wetlands mostly to urban development and farms. The Wetlands Recovery Project is a partnership of 17 federal and state agencies which have come together, pooling resources and expertise to acquire, restore and protect wetlands all the way from Pt. Concepcion to the US/Mexico border.

A watershed is defined as that area (drainage basin) where all storm water (and urban runoff) flows into a common receiving water (lake, bay, estuary, ocean). There are 5 major watersheds in Los Angeles County: the San Gabriel River Watershed, the LA River Watershed, the Santa Clara River Watershed (the biggest and the last unchannelized), and the Santa Monica Bay Watershed, which includes the Malibu, Topanga, and Ballona sub-watersheds, among others.

At least 18 watershed management plans are in the works in LA County. These plans are blueprints for river restoration and revitalization. There is a corridor plan for the LA River, but it doesn't take into consideration feeder streams and the headlands of the northern San Fernando Valley/LA/Ventura Counties. Watersheds, and their protection, know no political jurisdiction. Feeder streams in the northern SFV are actually headwaters for the LA River. Protection and management of these northern areas needs to be incorporated into all LA River plans in progress. It's important that decision-makers understand that the river doesn't start at the channelized areas.

An educational workshop sponsored by the Wetlands Recovery Project Manager's Group will be held for the upper Santa Clara Watershed this month. Plans are being made for a similar workshop in Chatsworth for the LA River headwaters, accenting the upper reaches.

For further information, contact:

Mary Loquvam, Watershed Coordinator  
Southern California Wetlands Recovery Project  
Los Angeles County Watershed Coordinator  
(213) 367-4132 [mary@lasgrwc.org](mailto:mary@lasgrwc.org)

### SSMPA General Membership Meeting Monday, March 17, 2003

Our program will be announced this evening. Please come and be surprised!

SSMPA General Membership Program meetings take place every 3rd Monday of the months during the months September through November and January through May. Program meetings begin at 7:15 p.m. and conclude by 9:00 p.m. Location: Rockpointe Clubhouse, 22300 Devonshire St., Chatsworth, on the south side, 1 block before Chatsworth Park South.

Members are invited to attend General Membership Program meetings and Board of Directors meetings. Board of Directors meetings take place at the Chatsworth Park South Visitors Center on the first Monday of the month at 7:30 p.m. Refreshments are served at program meetings.

**PRESS RELEASE**

Contact: Tony Bell, Communications Deputy  
Office: (213) 974-5555 Cell: (213) 272-8032  
E-mail: [tbell@bos.co.la.ca.us](mailto:tbell@bos.co.la.ca.us)

February 26, 2003

For Immediate Release

**SUPERVISORS SUPPORT PRESERVATION OF EQUESTRIAN LIFESTYLE**

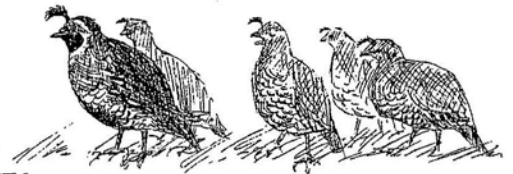
Los Angeles - Supervisor Michael D. Antonovich's motion to ensure that an equestrian lifestyle is preserved and expanded in the San Fernando, San Gabriel, Santa Clarita, and Antelope Valleys was unanimously approved by the Board of Supervisors.

"As new development applications are processed, it is vital that we consider the impacts to equestrians and the County's trail system," said Supervisor Antonovich.

Antonovich's motion directs the Department of Regional Planning, in conjunction with the Department of Parks and Recreation, to work with all City planning departments to preserve the equestrian lifestyle.

###

Patti Friedman, Deputy  
Office of Michael D. Antonovich, Supervisor, 5th District  
San Fernando Valley Field Office  
21949 Plummer St.  
Chatsworth, CA 91311 Tel.: 818/ 993-5170 Fax: 818/ 993-5764



**REP. SCHIFF & SEN. FEINSTEIN INTRODUCE BILL TO STUDY EXPANDING SANTA MONICA MOUNTAINS NATIONAL RECREATION AREA TO INCLUDE "RIM OF THE VALLEY"**

Early in February of this year, Sen. Dianne Feinstein and Congressman Adam B. Schiff introduced the "Rim of the Valley Corridor Study Act," legislation to explore the possibility of adding the Rim of the Valley Corridor in Southern California to the Santa Monica Mountains National Recreation Area.

The Santa Monica Mountains National Recreation Area, overseen by the National Park Service, is the world's largest urban park. Designated by Congress in 1978, it spans from the Ventura Freeway westward to the Pacific Ocean. Specifically, the legislation would direct the National Park Service and the U.S. Forest Service to jointly study the feasibility of more than doubling the size of the Santa Monica Mountains National Recreation Area by encompassing the Rim of the Valley corridor (which contains areas of rare Mediterranean ecosystems and encircles the mountains above the **San Fernando Valley**, as well as the La Crescenta, Santa Clarita, Simi, and Conejo valleys and the Arroyo Seco, linking wildlife habitat in the Santa Monica Mountains to the Angeles National Forest). The Act requires consultation with state, county, and local governments, and that a recommendation be reported to Congress within three years. An Act of Congress would then be required to designate any new addition to the Park System. In the 107th Congress, this legislation was successfully reported out of the Senate Energy & Natural Resources Committee in November 2002, but did not reach the House floor.

"It is my hope that the Rim of the Valley Corridor Study Act will embody a dream and vision of a Southern California enhanced not only by what was built, but also by what was preserved. Given the tremendous growth pressures in Southern California, we must act now to create a lasting legacy of nearby natural open space for our children - and their children - to enjoy," said Congressman Schiff.

***From Outings Chair of the Santa Susana Mountains Task Force***

**Judy Garris (818) 346-7654; [nature@lafn.org](mailto:nature@lafn.org)** Updated info under "Conservation" listings for Sierra Club Schedule #292

SANTA SUSANA MOUNTAINS TASK FORCE (SSMTF) (0491) supports the protection of the Santa Susana Mountains and the Simi Hills as the primary wildlife corridor linking the Angeles National Forest and the Los Padres National Forest to the Santa Monica Mountains. This narrow corridor is important for genetic mixing of wildlife between the adjoining mountains. Task force members work to preserve this unique land by attending meetings of government agencies and other groups and by submitting written comments. It's extremely important to preserve our rapidly disappearing natural open spaces not only for the wildlife but also for future human generations to know, respect and enjoy. We train hike leaders in the land use issues, history and the natural science of the Santa Susana Mountains and the Simi Hills. New leaders receive an introductory booklet on the history and wildlife of the area.

We work with the Santa Susana Mountain Park Assn. (SSMPA), a group that is involved with both Los Angeles and Ventura County land issues. SSMPA publishes a newsletter with SSMTF hikes and meeting dates. SSMPA donates a hikers first aid kit to new leaders. Meetings are held five times a year at the Chatsworth Park South Nature Center at the west end of Devonshire Blvd. in Chatsworth. Call for times and dates.

The Chatsworth Park South Nature Center is open to visitors every third Sunday from 12:00 to 2:00 p.m.

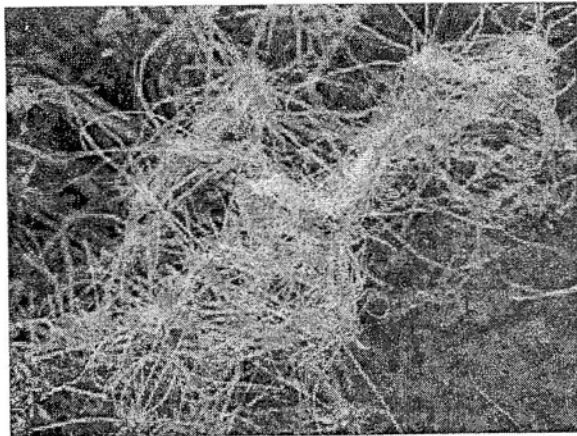
Judy Garris/CH/Out Dorian Keyser/VC/Sec

## Possible Criminal Conviction Traded for a Nature Preserve

In February the LA District Attorney's office dropped their criminal investigation against politically connected Newhall Land & Farming Co., which is planning to build a 12,000-acre new city near Santa Clarita. In return, Newhall Land agreed to devote 64 whole acres (*wow, out of 12,000!*) as a preserve for the endangered spineflower, which the company allegedly destroyed to clear space for some of its 22,000 houses since it just doesn't work to have a few rare plants standing in the way of millions of dollars worth of new homes sales.

Reacting to disclosures that Newhall Land destroyed endangered plants on its property, environmental activists and some planners are calling for restrictions on confidentiality agreements that prevent environmental consultants from sharing information with the public. The existence of suspected fields of the spineflower was not revealed for 2 years after the flowers were discovered because the consulting botanists who located them were required by Newhall Land to sign a confidentiality agreement -- an increasingly common legal practice that critics contend violates the spirit of state environmental laws. Critics contend that allowing developers to guide the writers of environmental impact reports rather than insisting they work directly for the county essentially lets builders police themselves.

In environmental documents filed with the county 12/2/02, after a search warrant served on the Newhall Land property and an investigation by the LA County District attorney's office, the developer acknowledged the earlier discovery of other spineflowers and the "unconfirmed" ones that the developer had never tested. By that time, Newhall Land had plowed under what state officials say were thousands of flowers in what the developer says was a farming operation.



Teena Takata

### CUSCUTACEAE

#### Dodder Family

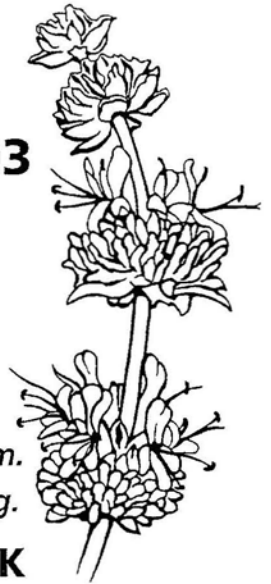
This plant, which looks like strewn spaghetti on bushes, is actually a parasitic plant. It is leafless, rootless and viney. The slender yellow or orange stems are fastened to the host plant by haustoria, a knoblike organ that penetrates and draws nourishment. Calyx is 4-5 lobed, corolla is 4-5 lobed, 4-5 stamens, 2 united carpels form 1 pistil. Favorite hosts: sage, buckwheat, deerweed. Flowers: 3/16" long or less, clustered in loose panicles. Blooms May to August.

# Wildflower Show

**APRIL 19-20, 2003**  
**SATURDAY & SUNDAY**  
**10am-4pm**

*Wildflower Displays*  
*Native Plants for Sale*  
*Books, Posters, and more...*  
*Wildflower Walks at 1:00pm.*  
**FREE admission and parking.**

**MALIBU BLUFFS PARK**  
PACIFIC COAST HIGHWAY AT MALIBU CANYON ROAD



Presented by California Native Plant Society,  
City of Malibu Parks & Recreation Department, and  
Charmlee Docents. More information: 310/317-1364.

CNPS Wildflower Show Coordinator: Snowdy Dodson, 818/782-9346. Email: snowdy.dodson@csun.edu

## SAVE CHATSWORTH, INC.

*"To ensure that all future development remains consistent with the existing rural character and heritage of Chatsworth."*

Are you aware there are developments in the Chatsworth area that will have drastic consequences to your quality of life?

484 single-family homes - Deerlake Ranch  
159 multi-family condos - West of Deerlake  
137 single-family homes - North of Deerlake  
All of these projects are just between  
Canoga Ave and Topanga Canyon Blvd

- **Traffic** - There will be 6,000 - 10,000 additional car trips PER DAY on your city streets and freeways
- **Schools** - Our schools are bursting at the seams and they are now expected to handle potentially thousands of new students.
- **Air Pollution** - Thousands of new trips per day. More smog emissions, but no contribution to support rapid transit.
- **Water Pollution** - The builder says they can only get 80% of the contaminants out of the storm water they will dump in Devil and Browns Canyon.
- **Parks, Libraries, City Services** - used by County residents, paid for by City residents
- **Density** - Another Porter Ranch turning our hills into a sea of concrete

**Help us fight Excessive and Irresponsible Development NOW!!!**

Please make your check payable to "Save Chatsworth, Inc."  
Amount enclosed: \$50 \_\_\_ \$100 \_\_\_ \$500 \_\_\_ \$1000 \_\_\_ Other \$ \_\_\_

Name: \_\_\_\_\_ Address: \_\_\_\_\_

Telephone: \_\_\_\_\_ Fax Number: \_\_\_\_\_

Put me on your e-mail list - my e-mail address is: \_\_\_\_\_

21704 Devonshire St. #133 • Chatsworth • CA • 91311  
www.savechatsworth.org (818) 831-5650

## U P C O M I N G H I K E S

### ● Sierra Club Hikes:

**Sat. 3/15: Sage Ranch:** 10 am to 12:30 pm. See flowers, birds, rock formations on easy-paced 4 mi RT walk in NW corner of SFV. Take Roscoe Blvd W to Valley Cir. Bl. R 1 mi to Woolsey Cyn Rd L to end of Woolsey, R 1/4 mi on Black Cyn Rd. Meet in parking area. Bring snack, water; boots preferred. Ldrs: Bob & Maureen Cates.

**Sun. 3/16 & 4/6: Simi Peak via China Flat:** Explore Simi Hills in springtime when the hills are green and wildflowers are in bloom. 7 mi, 1300' gain. Meet 9 am at China Flat trailhead. From Hwy 101, exit Lindero Cyn N 4 mi, park quietly on King James or Wembly Ave. Bring water, snack, boots. Rain cancels. Ldrs: Jason Lynch, Alice Cahill.

**Sun. 3/23: Wildwood Park Hike:** Blooming Extravaganza! See species including star, soap & mariposa lilies, fiddleneck, wild hyacinth, yucca & everlasting. Meet 2:30 pm for 2-1/2 mi hike. Take 118, then 23 S, exit Olson Rd. in Thous. Oaks, go R 3 mi (becomes Lynn Rd.), cross Avenida de Los Arboles, go R for 1 mi. At end, do U turn and enter parking lot. Tom Maxwell: (805) 492-2184.

### ● Sierra Club/Santa Susana Task Force Hike:

**Sun. 3/16: Stagecoach Trail Hike:** Interpretative hike into history in our Santa Susana Pass State Historic Park. Meet at 9 am for a 4 mi (700' gain) loop up the Stagecoach Trail. Stop at SSMPA's Nature Center after hike to see displays. From Topanga Cyn Blvd, turn west on Devonshire and drive into Chatsworth Pk S to 2nd parking lot by the Rec Bldg. Leader: Lee Baum; Asst. Leaders: Judy Garriss & Bob Galletly. Call (818) 341-1850 or (818) 346-7654 for further info.

### ● Santa Monica Mtns Conservancy / Mtns Rec. & Cons. Authority/Rim of the Valley Hikes:

**Sat. 3/15: Towsley Cyn. Park: Morning Bird Walk:** 8 to 10 am. Join us for a casual walk. Bring binoculars. Traveling north through Santa Clarita, take Calgrove exit from I-5, turn W back under freeway and take Old Road S, proceed to 1st driveway on your R. Look for sign: "Ed Davis Pk. at Towsley Cyn." Park back lot; meet at kiosk.

**Sat. 3/22: Happy Camp & Beyond: Spring Wildflowers Hike:** 9 am to 3:45 pm. Moderate hike (8+ mi RT) up over 2000+ ft. (1300' gain/loss). Wear boots, bring lunch and water. Call (805) 529-4693 for info.

**Sun. 3/30: Happy Camp & Beyond.** Mod. (8+ mi RT) up over 2000+ ft. (1300' gain/loss) to see panoramic views of Simi Valley & Moorpark to Channel Islands!. Wear boots, bring lunch, 2-3 qts. water. Call (805) 529-4828 for info.

### ● Rancho Simi Trail Blazers (RSTB) Hikes:

**Thurs. 3/13, 3/20 & 3/27: Thurs. Eve. Hikes:** Meet at 6 pm at Chumash trailhead. Directions: Take 118 Fwy. to Yosemite exit. Go N on Yosemite, turn R on Flanagan Dr. Trailhead is at end of Flanagan Dr. (moderate, 5 mi RT)

**Suns. 3/16, 3/23 & 3/30: Sun. Eve. Hikes:** Meet at 4 pm at Rocky Peak trailhead at end of Rocky Peak Rd. off Santa Susana Pass. (strenuous, 5 mi RT)

*For more information on RSTB hikes, contact the Rancho Simi Recreation and Park District at (805) 584-4400.*

## E V E N T S & O P P O R T U N I T I E S

● **From Outings Chair of Santa Susana Mountains Task Force, Judy Garriss (818) 346-7654; nature@lafn.org** Sierra Club leadership training applications must be submitted by **March 22** for the class on **Sat. 4/5**. The next one-day class will probably be held in the fall. You only have to lead a hike once a year to remain a certified Sierra Club leader. Call me, I am the Outings Chair of the Santa Susana Task Force, or read the task force mission statement in the next Sierra Club Schedule.

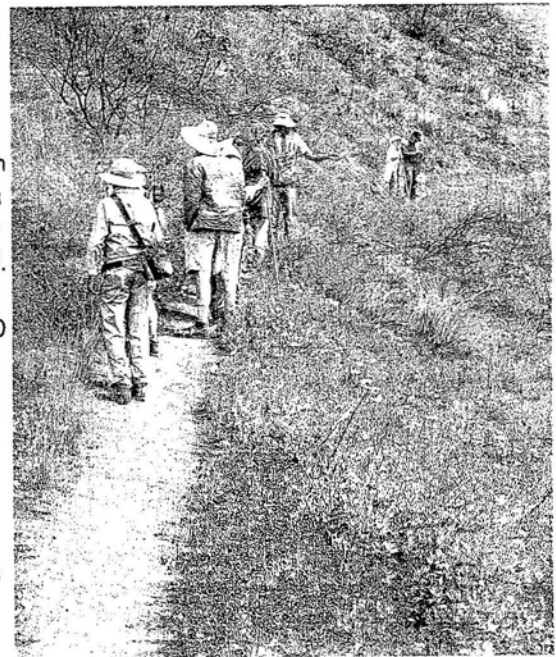
### ● Annual Celebration in Honor of Earth Day, Sun. 4/6: 10 am - 3 pm

Greet the beginning of Earth Month with dances and legends of Chumash and Tongva Indian Tribes at Chatsworth Nature Preserve. Co-sponsored by Sierra Club, Canada Goose Project, Southwestern Herpetologists Society, Santa Susana Mountain Park Association, Audubon Society, Wishtoyo Foundation and LA Dept. of Water & Power. Chumash Dolphin Dancers will light sacred sage in their Ceremonial Circle. Picnic under centuries-old oak trees. Park on Valley Circle Blvd. (Plummer) just west of Topanga Canyon Drive. Volunteers needed to staff information table and to lead docent tours around the ecology pond. Contact Dr. Rosemarie White, (818) 769-1521.

### ● Re-Enchanting the City #2: Urban Wildlife: How To Enjoy It and Protect It, Sat, 5/17 - 9 am to 3 pm

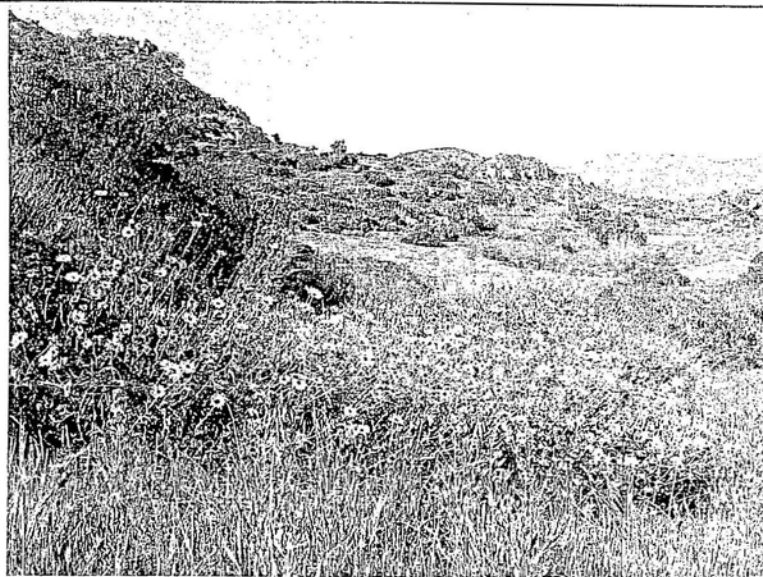
Presenter: John Hadiddion, Director of Urban Wildlife for the Humane Society. Location: The Grande Room of the LA Zoo. Call for more information, and if you can volunteer some time to help make this a special event. Contact Dr. Rosemarie White, (818) 769-1521; canadagooseproj@aol.com.

● **SSMPA Volunteer Opportunity:** Would you like to learn about nature and history and pass this knowledge on to others? We are looking for a few volunteers to staff our visitor's center in Chatsworth Park South one Sunday a month (12-2 pm) on a rotating basis. We will train you if necessary. Please contact Gretha Davis at (818) 340-4011.



**EVENT:**  
**DATE/TIME:**  
**PLACE:**  
**COST:**  
**WEBSITE:**  
**ACTIVITIES:**

**Pierce College** Agriculture Dept. Presents Its Annual **FARMWALK**  
**Sunday, April 27 / 9:30 am to 4:00 pm**  
 Los Angeles Pierce College, 6201 Winnetka Av, Woodland Hills 91371  
**Victory / Mason Entrance (Free Parking)**  
 \$5.00 donation requested per adult / Children under 12 play **FREE**  
[piercecollege.com](http://piercecollege.com) click on 'CAMPUS NEWS' click on 'FARMWALK' ICON  
 Tons of animals / **Sheep Shearing / Wool Spinning**  
 Large farm & plant equipment / Live **Music / Cow Milking**  
**A Petting Zoo / A Clydesdale Horse** plus other Horse Activities  
 Live Animals for Interaction Discussions held each hour  
 A **BBQ** @ reasonable prices / Loads of people to answer questions  
 Fire Dept. & Forestry Division / A Kung Fu Demo (11:30 - 12 noon)  
 Agriculture, Natural Resources, & Animal Science Class information  
 Nature Canyon walks overlooking our city / Various Educational Displays  
 Fun for all! Toddlers through active seniors  
**Only Physical Assistance Dogs Permitted Due to Livestock**  
 Bring Sunscreen, Sunglasses, Hats & Cameras with Lots of Film!



Photos by Teena Takata: ↑ Santa Susana Pass State Historic Park

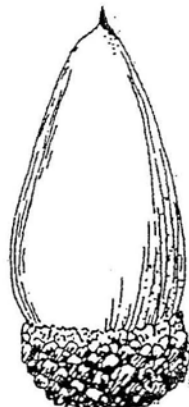


↑ Simi Hills, near Eagles Nest site

*Thank you for renewing your SSMPA membership:* Georganna Beuerman, Kim Sodek, Jeffery & Lisa Burkhart, Beverly Cervini, Ed Embree, Carolyn & Gerry Murphy, Lillian Hadaway, Don & Evelyn Heim, Yvonne Ash and Doreen Rusen.  
*Welcome to our new members:* Lynn Bonsall, Daniel Branstein and Barbara Lilly.  
*New life member:* Teena Takata.

## SANTA SUSANA MOUNTAIN PARK ASSOCIATION

WE INVITE YOU TO JOIN / RENEW / REJOIN S.S.M.P.A. (Please circle one.)



Valley Oak

Investing in the future of our communities and its resources is probably one of the best expenditures of our time and efforts. Return this cutoff with your contributions to help ensure our futures. Please make checks payable to SSMPA and send to SSMPA, P.O. Box 4831, Chatsworth, CA 91313-4831.

- Senior or Student (\$5.00)     Individual (\$10.00)     Family (\$15.00)  
 Business or Organization (\$25.00)     Life Member (\$100.00)

Name: \_\_\_\_\_ Phone: \_\_\_\_\_  
 Address: \_\_\_\_\_ Fax: \_\_\_\_\_  
 City/State/Zip Code: \_\_\_\_\_ Email: \_\_\_\_\_  
 Special Interest/Expertise: \_\_\_\_\_

The purposes of the Santa Susana Mountain Park Association are the protection, preservation, restoration, and enhancement of the Santa Susana Mountains and Simi Hills as open space lands and wildlife corridors linking the Los Padres National Forest and San Gabriel Mountains, including the Angeles National Forest, to the Santa Monica Mountains; as habitats for plants and animals native to the Santa Susana Mountains and the Simi Hills; as locales of unique geologic formations; as sites of ethnological, archaeological and historical interests; to provide passive recreational opportunities and environmental education opportunities; and, to support the acquisition of new public parks, open space and conservation easements, the expansion of existing parks, participate in the planning of park infrastructure and programs, and support said programs. To find out how you can volunteer for SSMPA, call Judy Garris at 818-346-7654.



## For your calendar



### SSMPA BOARD MEETINGS

@ Chatsworth Park South Visitors Center:

Monday, Apr. 7, 2003, 7:30 p.m.

Monday, May 5, 2003, 7:30 p.m.

### SSMPA PROGRAM MEETINGS

@ Rockpointe Clubhouse:

Monday, Mar. 17, 2003, 7:15 p.m.

Monday, Apr. 21, 2003, 7:15 p.m.

*About this newsletter:* If you have comments or would like to submit an article or announcement for publication in this newsletter, write to SSMPA, c/o Susan Gerke, Newsletter Editor, P.O. Box 4831, Chatsworth, CA 91313-4831 or call (818) 704-9304.

Please note the renewal date on your label and send in your dues  if you wish to continue your SSMPA membership and receive the newsletter. If you are current with your dues, kindly disregard this notice. If you are a Life Member, we thank you and invite your continued support with periodic donations to help meet the costs of producing this newsletter.



Santa Susana Mountain Park Association &  
Foundation for the Preservation of the Santa Susana Mountains  
P.O. Box 4831  
Chatsworth, CA 91313-4831

ADDRESS SERVICE REQUESTED

Non-Profit  
US Postage  
Paid  
Van Nuys, CA  
Permit No. 761

LIFE Member  
Nancy Razanski  
22149 James Alan Circle  
Chatsworth CA 91311-2051

